

Vertex Adjustable Gates

Installation Guide



A step-by-step guide to installing your gate

Introduction

Thank you for choosing Fentec Aluminium Range. This product will provide you with many years of trouble free protection if installed in accordance with the directions outlined in this document.

The recommendations detailed in this guide are formulated along the lines of good building practice. They are not intended to be an exhaustive statement of all the relevant data.

If you have any questions, please contact our Technical Team on 0800 002 725. We are always happy to help in any way we can.

Tool List

Make sure you choose the right tools before you start your gate.

Tools

- Tape measure
- Square
- Drill/Driver
- Hex drive bit 5/16 driver
- Circular Saw/Other Saw
- Rubber Mallet

Safety Gear (minimum required)

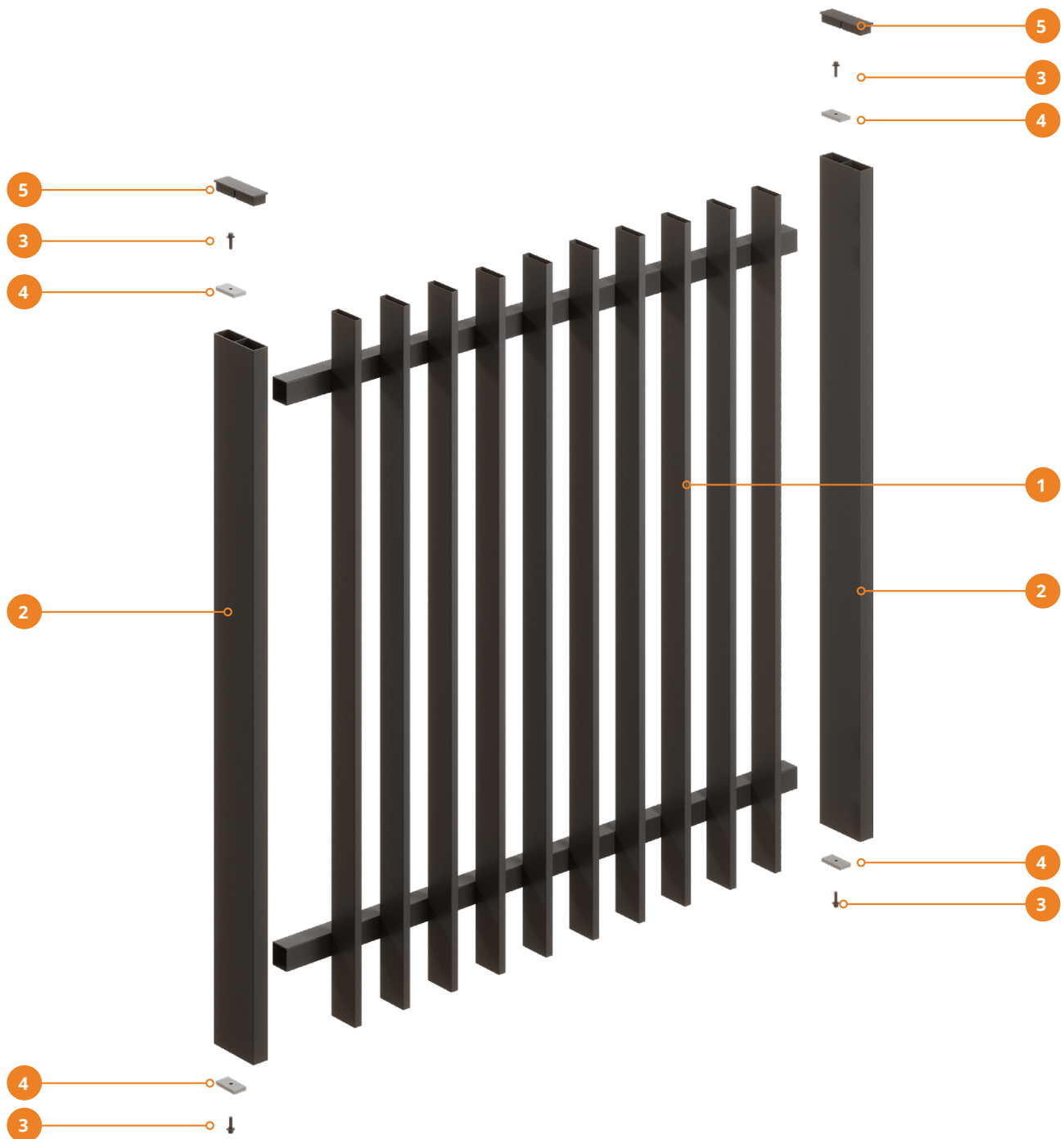
- Safety Boots
- Gloves
- Eye Protection
- Hearing Protection
- Sun Protection

It is recommended that the reader pays particular attention to those items identified as **Important** in this manual to ensure satisfactory long-term performance.

Component List

Take care when opening and unloading the package. Vertex Adjustable Gates are packaged fully assembled. If the gate does not need adjusted in size, it can be installed immediately after unpacking.

Ensure all components are accounted for and check it is all undamaged.



A complete Vertex Adjustable Gate consists of:

1. Vertex Panel



x1

2. Stiles 110x32mm



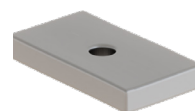
x2

3. Tek Screws
12gx25mm



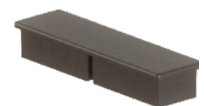
x8

4. Retaining Clips



x4

5. Stile Caps



x2

Step 1 > Measuring the gate

Measure the distance between the posts where the gate is going to hang from. From that measurement, allow clearance for the hardware you intend to use.

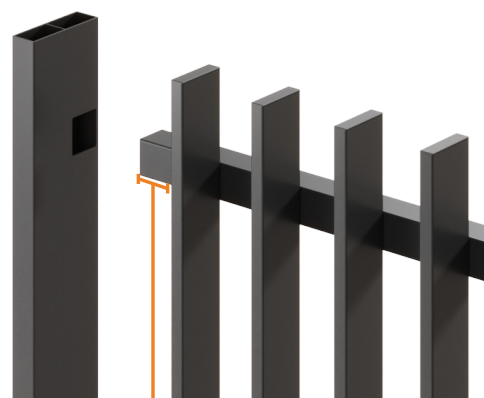
If the gate width is correct for your space go to [Step 5](#) on [page 06](#).

When measuring the gate for resizing, keep in mind, the rail should go all the way into the stile. The retaining clip is designed to be inserted inside the stile and screwed into the rail to hold it in place.

Ensure the rail has the following allowances when measuring for resizing:

110x32mm stile: up to 30mm
(stile width 32mm minus 2mm wall thickness)

Max 1160mm plus hinge and latch clearance



Allow enough length on rail to go into stile

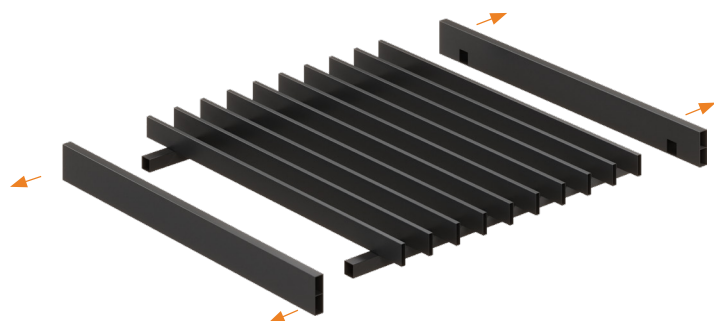
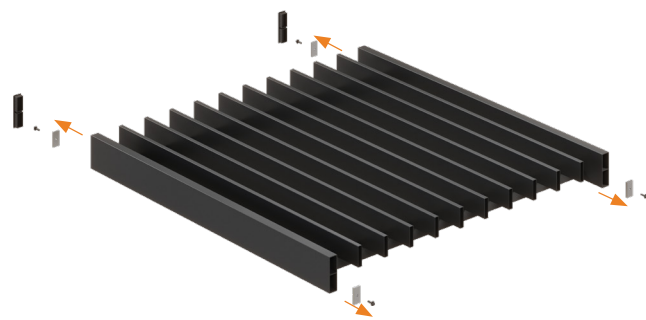
Step 2 > Disassembling the gate

If the gate width is correct for your space go to [Step 5](#) on [page 06](#).

If resizing the gate, cutting an equal amount from both ends is recommended to keep the gate appearing even.

To remove the stile,

- Remove the stile cap.
- Undo the tek screws holding the retaining clips in place. There are two retaining clips at the top and bottom of each stile holding the rails in place.
- Extract the retaining clip.
- Slide the stile out from the rails.



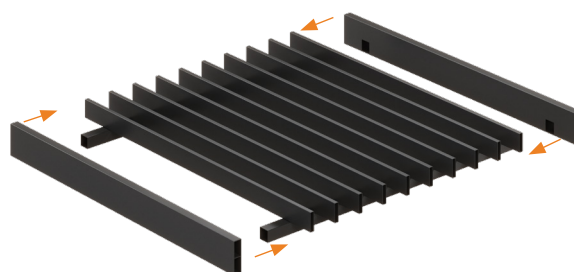
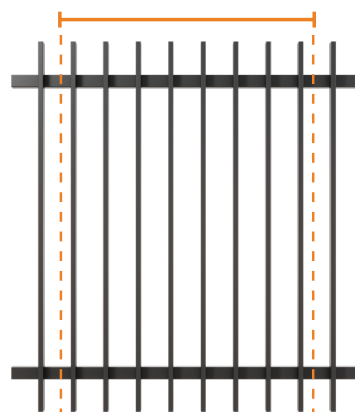
Step 3 > Cutting the gate to size

When cutting panels or stiles to length, use a hacksaw or a power saw with a sharp diamond tip blade, or tungsten tip on aluminium. Remove any swarf to prevent corrosion.

Grinders or abrasive cut off wheels aren't recommended as these can burn the powder coat finish.

- Mark the required length on the gate, keeping in mind that the rail should go all the way into the stile. Cutting an equal amount from both ends will ensure the gate spacing remains consistent.
- Ensure the rail has up to 30mm allowance (to be inserted into the stile on either side) when measuring for resizing (stile width 32mm minus 2mm wall thickness).
- Cut the rail to your required length.
- Slot the stiles back onto the rails. Do not fix the retaining clips into place at this point.
- Ensure the gate is square by measuring both diagonals from corner to corner. These should be the same length.
- Lift the gate into position to confirm the gate fits the space.

Cut from both ends to keep consistent spacings

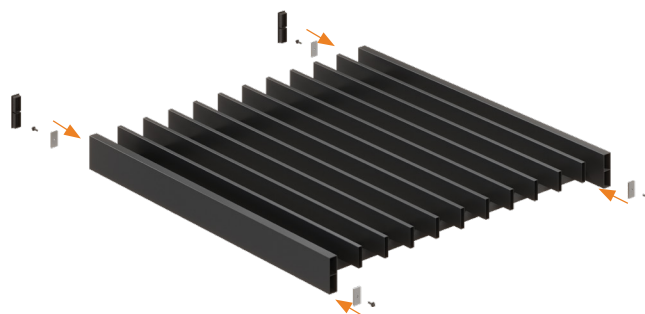


Step 4 > Completing assembly

Once the gate has been confirmed to fit the space, it can be fully reassembled.

To reattach the stile:

- Insert the retaining clip into the stile and fix into place with the tek screws.
- Insert the stile caps back into the top of the stiles.
- Inspect the final assembled gate for stability and alignment and make any necessary final adjustments.

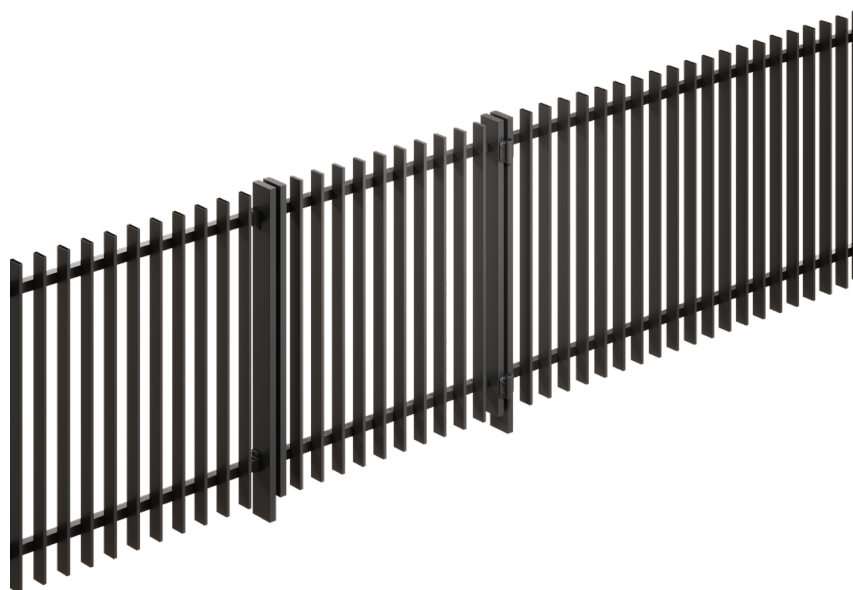
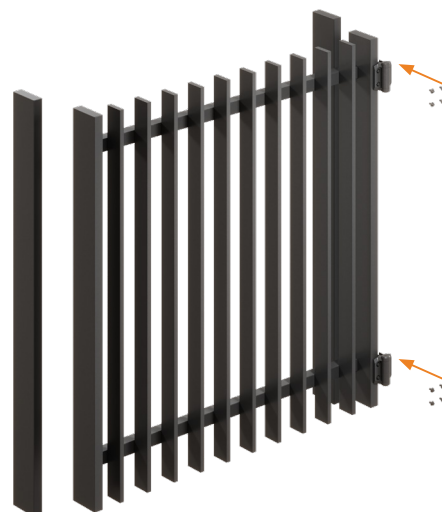
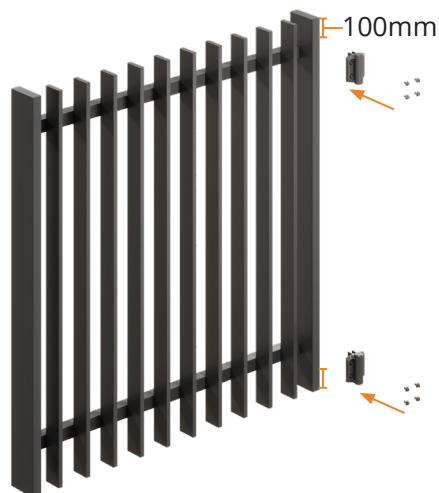


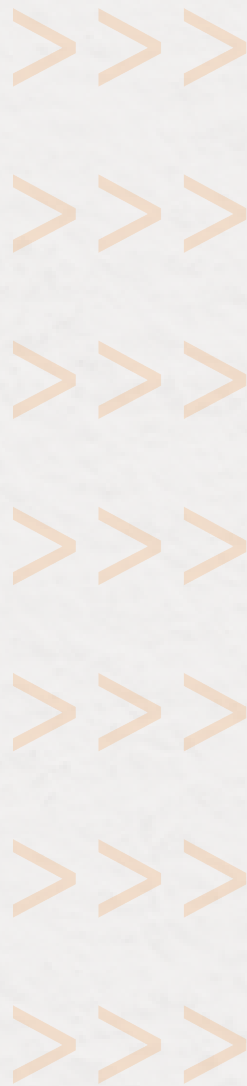
Step 5 > Installing the gate

Once the gate is completely assembled, it is ready to be installed.

- a. Decide the best orientation for the gate. Determine whether it needs to be hinged on the left or right side, and if it needs to open inwards or outwards.
- b. Install your choice of hinges onto the gate. The recommended position for the hinges is set 100mm from the top and bottom of the stile. Position and attach the hinges to the stile using the provided screws.
- c. Ensure the hinges are attached to the correct side of the stile.
- d. Hang the gate. Set the gate in the gate way, making sure the top of the gate is level with the adjoining fence. It can make it easier to get a second person to assist with holding the gate.
- e. Once the gate is in the correct position and is straight and level, screw the hinges to the post. Before fully fastening the hinges in place, open the gate to test the function.
- f. If no adjustments are required, fasten the screws completely.
- g. Install your choice of latch. Refer to the manufacturer's instructions on how to install the latch, as this can vary depending on latch type.

Recommended hinge placement 100mm from top and bottom of stile





fentec.co.nz | 0800 002 725
sales@fentec.co.nz

